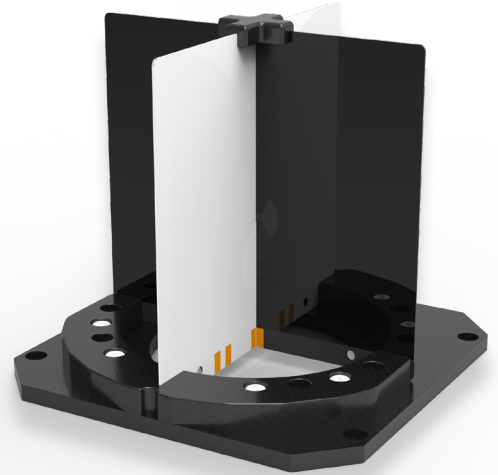


Features

- Capable of Transmitter radiated power testing and Receiver sensitivity testing
- Wide bandwidth design for 5G FR1, 4G LTE, WLAN, Bluetooth, GPS, LoRa, Z-wave, Zigbee application
- Dual polarization design for all kinds of incident wave receiving
- Compact size for compact shielding box



Specifications

Model A

Operating Frequency	0.7GHz~7.2GHz
VSWR	3:1
Isolation	20dB @0.7GHz~6GHz 15dB @6GHz~7.2GHz
Polarization	Dual, Vertical and Horizontal
Impedance	50 Ohm
Dimension	L100mm x W120mm, thickness=0.8mm
RF Connector	SMA-F

Dimension

